

CERTIFICATE OF LOCATION OF GOVERNMENT CORNER

NORTH 1/4 Corner of Section 17, Township 106, Range 42, 5TH P.M.

STATE OF MINNESOTA, County of MURRAY

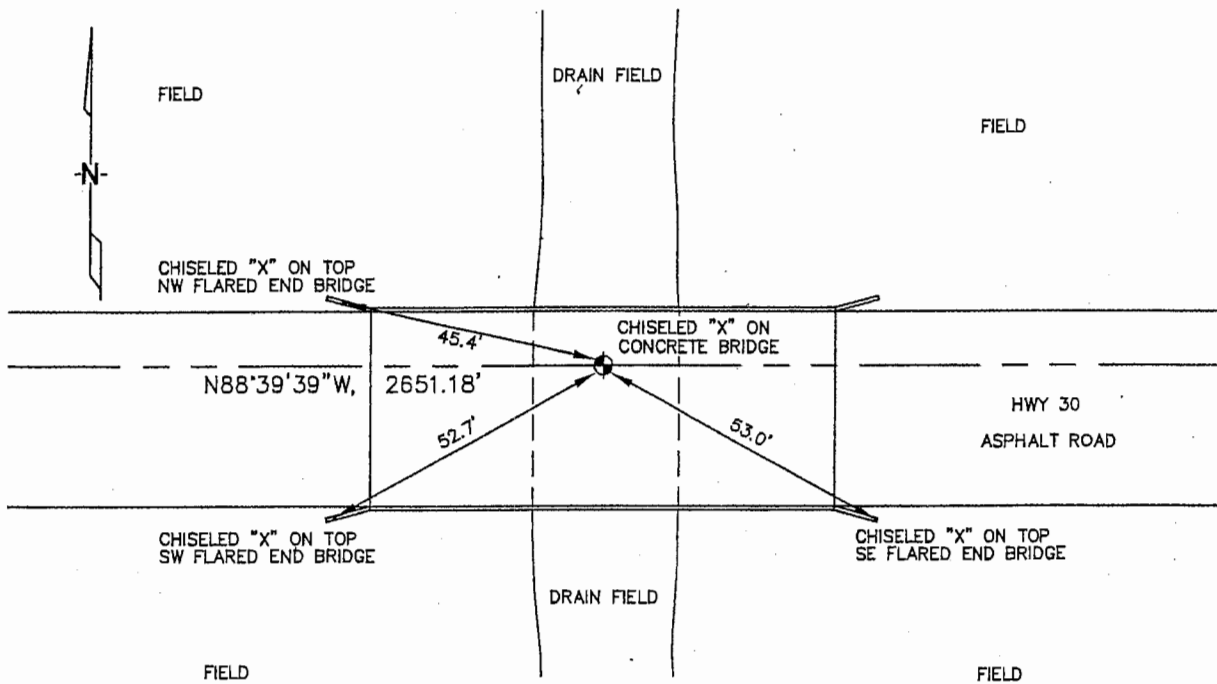
At the corner location shown on the sketch :

On 3/21/2006 found CHISELED "X" CUT ON CONCRETE BRIDGE DECK.

left monument as found, lowered monument, removed monument (explain)

On _____ set _____

Sketch of reference ties



N: 696,091.57
E: 2,121,108.80
MN SOUTH ZONE, NAD 83

Statement of evidence relative to this corner location is on back page

I hereby certify that this document and the data contained herein was prepared by me or under my direct supervision.

Thomas J. [Signature] 4/24/06
Signature Date
Registration No. 44563

- Land Surveyor, Professional Engineer
- County Surveyor, County Engineer

OFFICE OF THE COUNTY RECORDER
County of _____

SEP 28 2006

I hereby certify that this document was filed in the Co. Recorders office at _____ M. on the _____ day of _____ A.D., 20

County Recorder James V. Johnson
By _____, Deputy

DOCUMENT NO. _____

STATEMENT OF EVIDENCE:

NORTH 1/4 CORNER, SECTION 17, T. 106 N., R. 42 W.,
MURRAY COUNTY, MINNESOTA

1866

J. W. BISHOP, U.S. DEPUTY SURVEYOR
MONUMENTED CORNER AS PER INSTRUCTIONS.

3/21/2006

UNEIG, ENGINEERS, INC., SURVEY CREW, BRIAN
PAYNE PARTY CHIEF FOUND A CHISELED "X" ON
CONCRETE DECK OF BRIDGE.

TIES: NW - 45.4' TO CHISELED "X" ON TOP,

NW. FLARED END;

SW - 52.7' TO CHISELED "X" ON TOP,

SW. FLARED END;

SE - 53.0' TO CHISELED "X" ON TOP,

SE. FLARED END;

W - 2651.18' TO NW CORNER, SEC 17.